



Funded by the National Science Foundation

# Industry-University Cooperative Research Centers Program (IUCRC)

IUCRCs drive innovation by facilitating partnerships between universities, companies, and government agencies

## MISSION

IUCRCs leverage the talent and resources of industry, universities, and government to generate advances in technology and enhance industrially relevant workforce training for researchers.

## FAST FACTS

(Data from 2015)

# 1:42

\$1 in member contributions leverage \$41 additional dollars in research funding

# 876

unique members

# 76

centers nationwide

# 211

research sites worldwide

# 37

states with an IUCRC site

# 1,586

center-trained students hired by members (2006–2015)

For more information visit [www.nsf.gov/IUCRC](http://www.nsf.gov/IUCRC)

## THE PARTNERSHIP



### Government

NSF catalyzes partnership. Other government entities fund research relevant to their needs



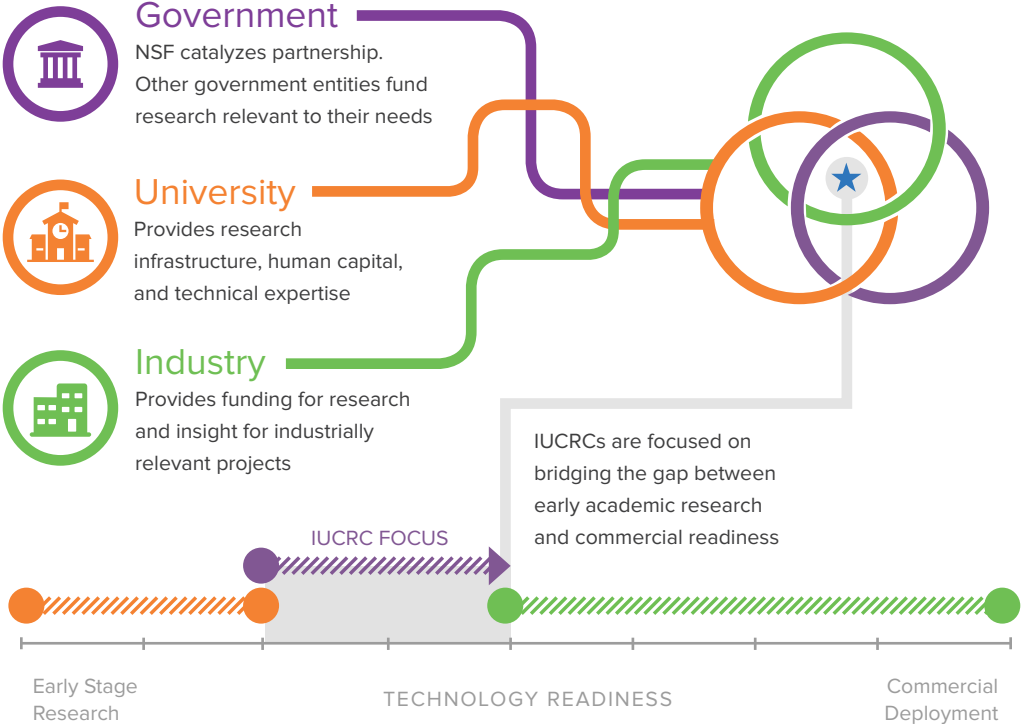
### University

Provides research infrastructure, human capital, and technical expertise

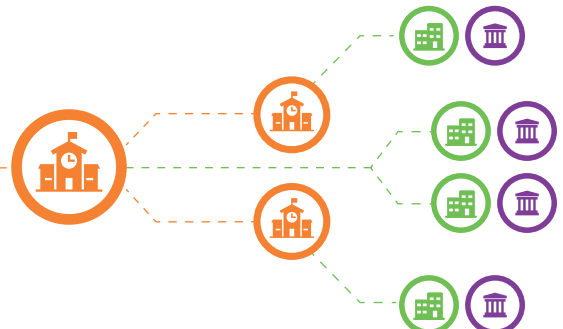
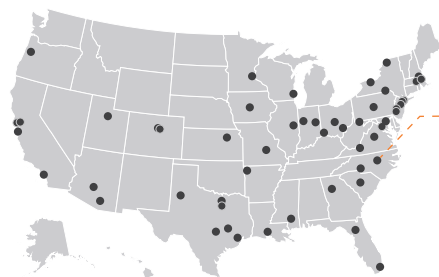


### Industry

Provides funding for research and insight for industrially relevant projects



## THE STRUCTURE



### Centers

Research collaborations focused on a topical area that are catalyzed by NSF and funded by industrial and government members

### Sites

Geographically distinct research labs that are located at universities and participate in the IUCRC

### Members

Companies and government agencies provide funding and expertise for needed innovation in their sector or industry



Funded by the  
National Science  
Foundation

# Industry-University Cooperative Research Centers Program (IUCRC)

## Member Benefits

### TAKE ACTION

#### Search for Existing Centers

Search [iucrc.org](http://iucrc.org) for existing centers in relevant technology sector. Contact center director for guidance on joining existing center.

#### Enable Creation of New Centers

If no center exists in relevant sector, partner with academic institution by sending a 'letter of support' and 'letter of financial commitment' articulating how the center would address sector, corporate, or government needs

#### Sign a Membership Agreement

In order to become a member of a center, sign a membership agreement committing funds to a research site that is part of an IUCRC.

#### Form an IAB

Form an industrial advisory board (IAB) that will define research priorities for the IUCRC and agree on bylaws that define center policies and operations

#### Vote on Projects

Through a democratic process, IAB members vote on projects. Projects of greatest interest to the IAB will be executed

For more information visit  
[www.nsf.gov/IUCRC](http://www.nsf.gov/IUCRC)

### VALUE PROPOSITION



NSF provides \$ for administrative and management costs



Universities provide infrastructure and people to conduct research



Members gain access to pre-competitive research and highly-skilled workforce (only 10% overhead)



#### Access to Talent

Opportunity to mentor and train students to attain desired skills for work in your industry



#### Leverage Research Dollars

Earn higher return on investment when research is jointly funded



#### De-Risk R&D

Share risks of early stage research leading to disruptive business opportunities



#### Access to Network

Learn from interacting with center participants within your technology sector



#### Research Cost Avoidance

Save internal research dollars through access to facilities, infrastructure, and lower human capital costs



#### Access to Intellectual Property

Gain royalty-free, non-exclusive licenses on intellectual property produced in the center

### KEY EVENTS TIMELINE

